



Spinal Cord Injury Organizations

People with spinal cord injury can live a healthy life. The follow web sites can be helpful.

National Spinal Cord Injury Association

6701 Democracy Blvd. #300-9, Bethesda, MD 20817

Tel: 301-588-6959 800-962-9629 <http://www.spinalcord.org>

Paralyzed Veterans of America (PVA)

801 18th Street, NW, Washington, DC 20006-3517

Tel: 202-USA-1300 (872-1300) 800-424-8200 <http://www.pva.org>

If you are interested in current research about finding a cure for spinal cord injury, the following agencies can be helpful to you.

Christopher Reeve Paralysis Foundation

500 Morris Avenue Springfield, NJ 07081

Tel: 973-379-2690 800-225-0292 <http://www.apacure.com>

Kent Waldrep National Paralysis Foundation

16415 Addison Road, Suite 550 Addison, TX 75001

Tel: 972-248-7100 800-SCI-CURE (925-2873)

<http://www.spinalvictory.org>

National Rehabilitation Information Center (NARIC)

1010 Wayne Avenue, #800, Silver Spring, MD 20910-5633

Tel: 301-562-2400 800-346-2742 <http://www.naric.com>

Miami Project to Cure Paralysis/ Buoniconti Fund

P.O. Box 016960, R-48 Miami, FL 33101

Tel: 305-243-6001 800-STANDUP (782-6387)

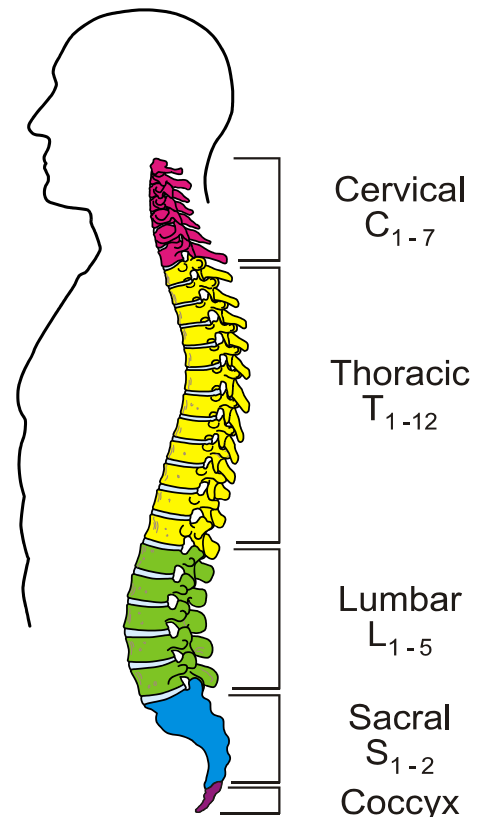
<http://www.miamiproject.miami.edu>

Spinal Cord Society

19051 County Highway 1, Fergus Falls, MN 56537

Tel: 218-739-5252 or 739-5261

<http://users.aol.com/scsweb>



Adapted from the Spinal Cord Injury Information Page (reviewed 7-1-2001) by the National Institute of Neurological Disorders and Stroke, National Institutes of Health.

Disclaimer: This list is provided for information purposes only. Your use of this information is your own choice. This list does not represent endorsement by or an official position of Rancho Los Amigos National Rehabilitation Center.

Provided as a courtesy by:

Rancho Los Amigos National Rehabilitation Center

Patient Education • 7601 E. Imperial Highway • Downey, CA 90242

Phone: 1-877-RANCHO-1 • Fax: 562 401-6690 • please visit us at <http://www.rancho.org>

ESD0008SpinalCordInjuryOrganization.wpd 05/21/03